



JMD-X1
JMD-X1L

Milling Drilling Center

50000025M.....1~230V,50Hz

50000046M.....1~230V,50Hz

PARTS LIST



JPW Tool Group Hong Kong Limited
98 Granville Road, Tsimshatsui East, Kowloon, Hong Kong, PRC
www.jettools.com

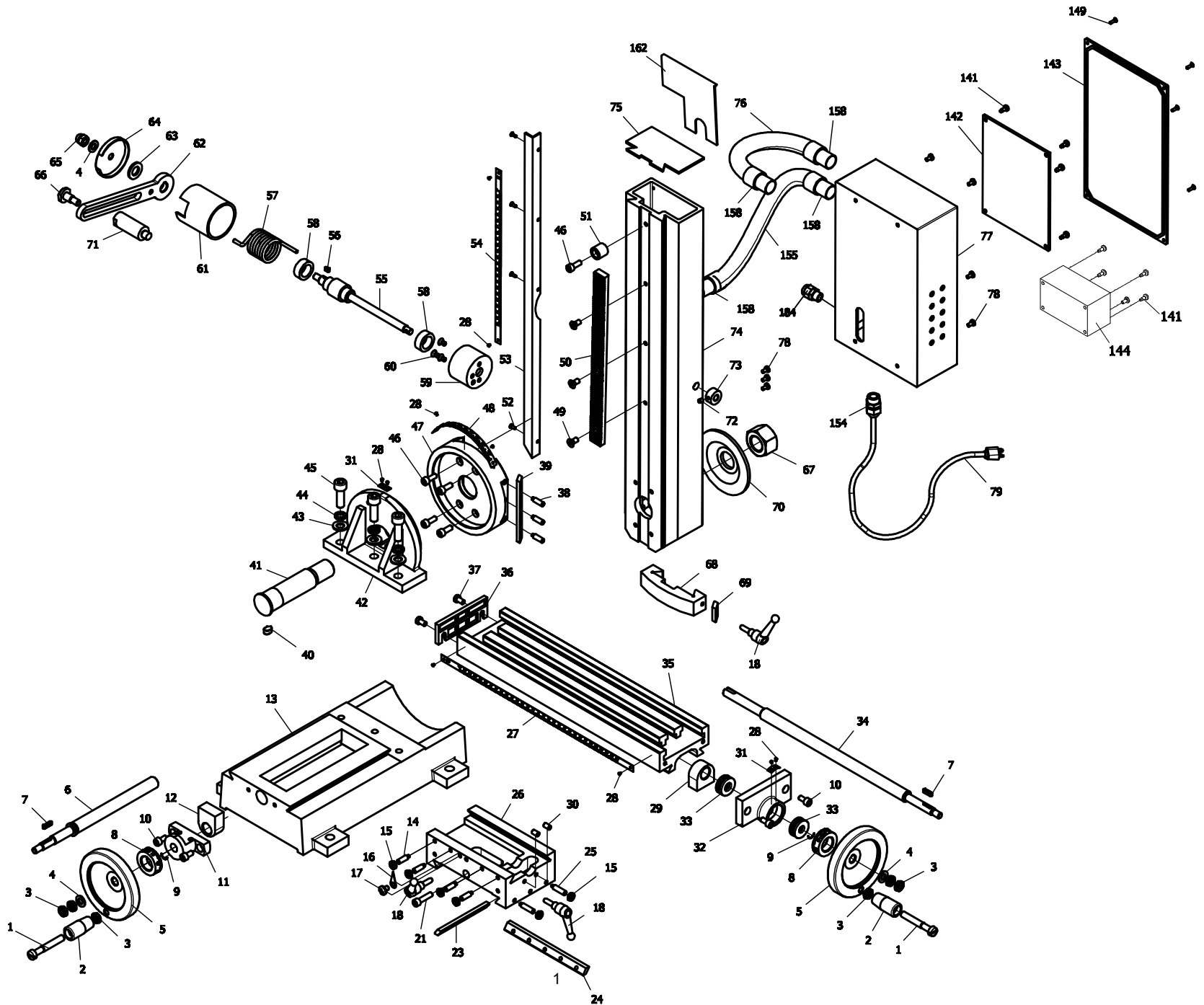
105082, : « »
, , .17
www.jettools.ru

Made in PRC /

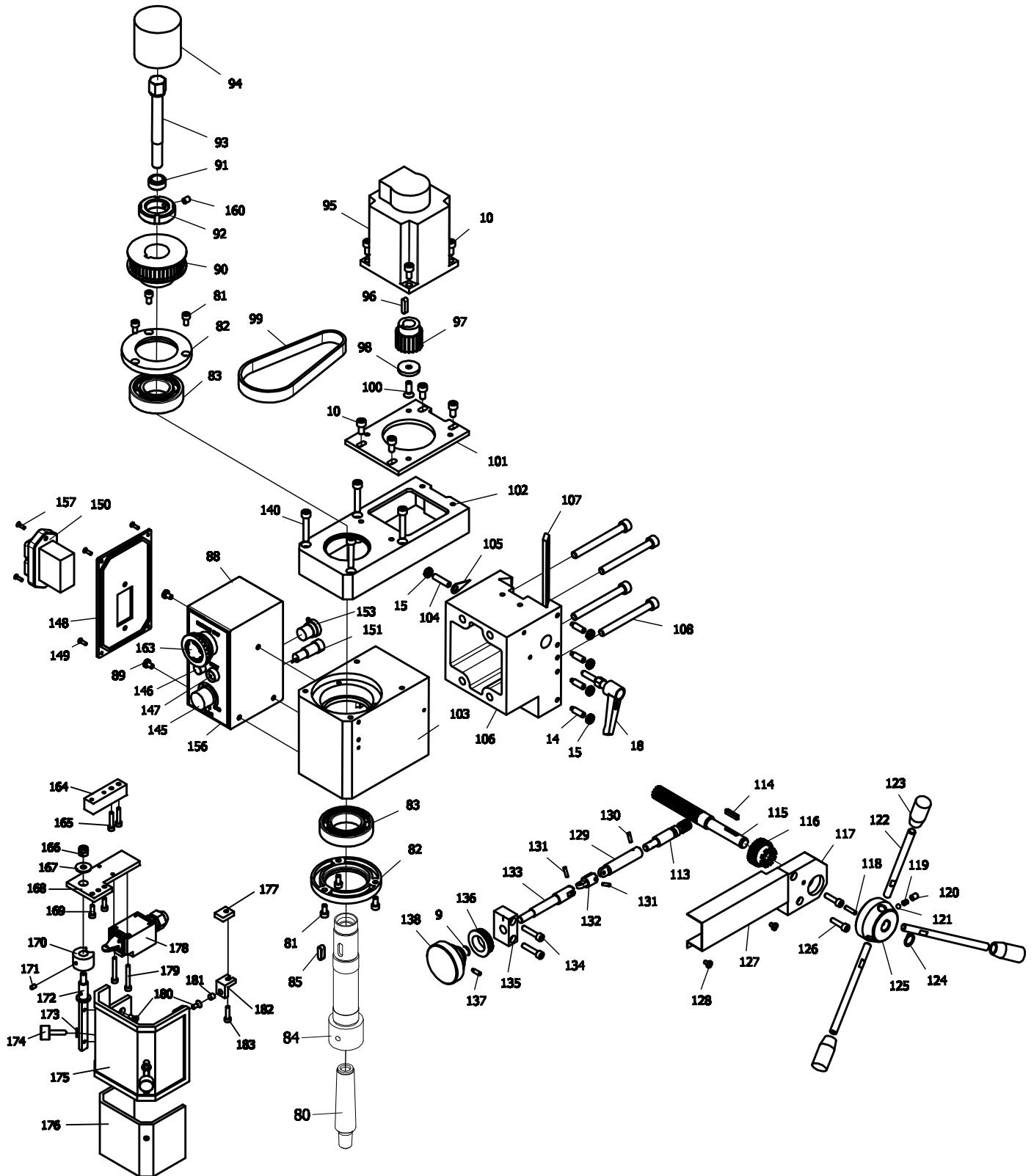
P-50000025M/ 50000046M

2022-11

Parts Breakdown For JMD-X1 / JMD-X1L MILLING/DRILLING CENTER (I)



Parts Breakdown For JMD-X1 / JMD-X1L MILLING/DRILLING CENTER (II)



PART LIST FOR JMD-X1 / JMD-X1L MILLING DRILLING CENTER

No.	Part no.	Description	Size	Qty.
1	JMDX1-1	Screw	M8X55	2
2	JMDX1-2	Handle		2
3	JMDX1-3	Nut	M8	6
4	JMDX1-4	Washer	8	3
5	JMDX1-5	Handle		2
6	JMDX1-6	X-AXIS Feeding Screw for JMD-X1		1
	JMDX1L-6	X-AXIS Feeding Screw for JMD-X1L		1
7	JMDX1-7	Key	4X16	2
8	JMDX1-8	Dial		2
9	JMDX1-9	Spring		3
10	JMDX1-10	Screw	M6X12	12
11	JMDX1-11	X-AXIS Screw Seat		1
12	JMDX1-12	Nut		1
13	JMDX1-13	Base		1
	JMDX1L-13	Base		1
14	JMDX1-14	Screw	M6X20	8
15	JMDX1-15	Nut	M6	11
16	JMDX1-16	Indicator		1
17	JMDX1-17	Screw	M6X8	1
18	JMDX1-18	Spring Series# 13061262 and down		3
	JMDX1-18A	Handle Series#13091263 and up		4
19	JMDX1-19	Screw Series# 13061262 and down		3
		CANCEL Series# 13091263 and up		
20	JMDX1-20	Handle Series# 13061262 and down		3
		CANCEL Series#13091263 and up		
21	JMDX1-21	Screw	M6X25	1
22	JMDX1-22	Bolt Series# 13061262 and down		3
		CANCEL Series#13091263 and up		
23	JMDX1-23	X-AXIS Wedge for JMD-X1		1
	JMDX1L-23	X-AXIS Wedge for JMD-X1L		1
24	JMDX1-24	Y-AXIS Wedge		1
25	JMDX1-25	Screw	M6X 25	2
26	JMDX1-26	Saddle for JMD-X1		1
	JMDX1L-26	Saddle for JMD-X1L		1
27	JMDX1-27	Ruler forJMD-X1		1
	JMDX1L-27	Ruler forJMD-X1L		1
28	JMDX1-28	Rivet	2X3	10
29	JMDX1-29	Nut		1
30	JMDX1-30	Screw	M6X10	2
31	JMDX1-31	Guide Finger		2
32	JMDX1-32	Bearing Seat for JMD-X1		1
	JMDX1L-32	Bearing Seat for JMD-X1L		1
33	JMDX1-33	Bearing	8200	2
34	JMDX1-34	Y-AXIS Feeding Screw for JMD-X1		1
	JMDX1L-34	Y-AXIS Feeding Screw for JMD-X1L		1
35	JMDX1-35	Working Table for JMD-X1		1
	JMDX1L-35	Working Table for JMD-X1L		1
36	JMDX1-36	End Cover for JMD-X1		1
	JMDX1L-36	End Cover for JMD-X1L		1

PART LIST FOR JMD-X1 / JMD-X1L MILLING DRILLING CENTER

No.	Part no.	Description	Size	Qty.
37	JMDX1-37	Screw	M6X10	2
38	JMDX1-38	Screw	M6X20	3
39	JMDX1-39	Wedge		1
40	JMDX1-40	Key	8X12	1
41	JMDX1-41	Shaft		1
42	JMDX1-42	Bracket		1
43	JMDX1-43	Washer	10	3
44	JMDX1-44	Spring Washer	M10	3
45	JMDX1-45	Screw	M10X30	3
46	JMDX1-46	Screw	M6X16	5
47	JMDX1-47	Connect Tray		1
48	JMDX1-48	Ruler		1
49	JMDX1-49	Screw	M6X12	3
50	JMDX1-50	Rack		1
51	JMDX1-51	Fixed Sleeve		1
52	JMDX1-52	Screw	M3X8	4
53	JMDX1-53	Bracket		1
54	JMDX1-54	Ruler		1
55	JMDX1-55	Shaft		1
56	JMDX1-56	Key	4X8	1
57	JMDX1-57	Spring		1
58	JMDX1-58	Ferrule		2
59	JMDX1-59	Spring Seat		1
60	JMDX1-60	Screw	M5X8	3
61	JMDX1-61	Cover		1
62	JMDX1-62	Support		1
63	JMDX1-63	Washer	12	1
64	JMDX1-64	Cover		1
65	JMDX1-65	Nut	M8	1
66	JMDX1-66	Screw		1
67	JMDX1-67	Support Series# 13061262 and down		1
	JMDX1-67A	NUT Series#13091263 and up	M24	1
68	JMDX1-68	Limit Block		1
69	JMDX1-69	Small Wedge		1
70	JMDX1-70	Washer		1
71	JMDX1-71	Nut Series# 13061262 and down	M24	1
	JMDX1-71A	Support Series#13091263 and up		1
72	JMDX1-72	Screw	M5X6	1
73	JMDX1-73	Tighten Ring		1
74	JMDX1-74	Fuselage		1
75	JMDX1-75	Coping		1
76	JMDX1-76	Soft tube		2
77	JMDX1-77	Electric Box		1
78	JMDX1-78	Screw	M4X8	7
79	JMDX1-79	power line		1
80	JMDX1-80	B16 Shank		1
81	JMDX1-81	Screw	M5X10	6
82	JMDX1-82	Oil Cover		2
83	JMDX1-83	Bearing	80206	2

PART LIST FOR JMD-X1 / JMD-X1L MILLING DRILLING CENTER

No.	Part no.	Description	Size	Qty.
84	JMDX1-84	Spindle		1
85	JMDX1-85	Key	6X18	1
87	JMDX1-87	Screw Series# 13061262 and down		2
		CANCEL Series#13091263 and up		
88	JMDX1-88	Control Box		1
89	JMDX1-89	Screw	M5X8	3
90	JMDX1-90	Pully		1
91	JMDX1-91	Fixed Sleeve		1
92	JMDX1-92	Nut		1
93	JMDX1-93	Draw Bar	M12	1
94	JMDX1-94	Dustproof		1
95	JMDX1-95	Brushless motor		1
96	JMDX1-96	Key	5X20	1
97	JMDX1-97	Pully		1
98	JMDX1-98	Washer	IV	1
99	JMDX1-99	Timing belt	70T	1
100	JMDX1-100	Screw	M6X18	1
101	JMDX1-101	Connect Board		1
102	JMDX1-102	Cover		1
103	JMDX1-103	Spindle box		1
104	JMDX1-104	Screw	M6X25	1
105	JMDX1-105	Indicator		1
106	JMDX1-106	Spindle Box		1
107	JMDX1-107	Wedge		1
108	JMDX1-108	Screw	M8X80	4
109	JMDX1-109	Bolt Series# 13061262 and down		1
		CANCEL Series#13091263 and up		
110	JMDX1-110	Spring Series# 13061262 and down	Y II	1
		CANCEL Series# 13091263 and up		
111	JMDX1-111	Small Handle Series# 13061262 and down		1
		CANCEL Series# 13091263 and up		
112	JMDX1-112	Screw Series# 13061262 and down	M6*10	1
		CANCEL Series# 13091263 and up		
113	JMDX1-113	Worm		1
114	JMDX1-114	Key	4X20	1
115	JMDX1-115	Gear		1
116	JMDX1-116	Gear		1
117	JMDX1-117	Worm Support		1
118	JMDX1-118	Pin	B4X16	1
119	JMDX1-119	Spring		1
120	JMDX1-120	Screw	M6X8	1
121	JMDX1-121	Steel Ball		1
122	JMDX1-122	Handle		3
123	JMDX1-123	lever Cap	M8X40	3
124	JMDX1-124	Check Ring	12	1
125	JMDX1-125	Handle Seat		1
126	JMDX1-126	Screw	M5X20	2
127	JMDX1-127	Cover		1
128	JMDX1-128	Screw	M4X6	2

PART LIST FOR JMD-X1 / JMD-X1L MILLING DRILLING CENTER

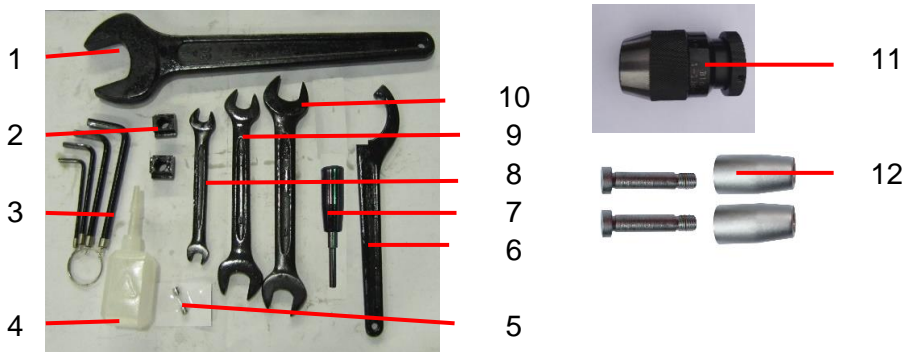
No.	Part no.	Description	Size	Qty.
129	JMDX1-129	Sleeve		1
130	JMDX1-130	Pin	A3X12	1
131	JMDX1-131	Pin	B3X12	2
132	JMDX1-132	Universal Joint		1
133	JMDX1-133	Universal shaft		1
134	JMDX1-134	Screw	M5X25	2
135	JMDX1-135	Bracket		1
136	JMDX1-136	Scale Dial		1
137	JMDX1-137	Screw	M4X12	1
138	JMDX1-138	Small Handle		1
139	JMDX1-139	Spring Series# 13061262 and down		1
		CANCEL Series#13091263 and up		
140	JMDX1-140	Screw	M6X35	4
141	JMDX1-141	Screw	ST4.2X9.5	8
142	JMDX1-142	PC Board		1
143	JMDX1-143	Cover		1
144	JMDX1-144	Filter	XMT-2305L	1
145	JMDX1-145	Button		1
146	JMDX1-146	Green Lamp		1
147	JMDX1-147	Yellow Lighting Pipe		1
148	JMDX1-148	Cover Series# 13061262 and down		1
	JMDX1-148A	Cover Series#13091263 and up		
149	JMDX1-149	Screw	ST2.9X9.5	8
150	JMDX1-150	Switch Series# 13061262 and down		1
	JMDX1-150A	Switch Series# 13091263 and up		
151	JMDX1-151	Fuse		1
153	JMDX1-153	Connector Series# 13091263 and up		1
154	JMDX1-154	lock connector Series# 13091263 and up		1
155	JMDX1-155	Soft tube Series# 13091263 and up		1
156	JMDX1-156	Switch label Series# 13091263 and up		1
157	JMDX1-157	Cross recessed countersunk head screws Series# 13091263 and up	M4X16	2
158	JMDX1-158	Hose fitting Series# 13091263 and up	AD21.2 M20B	4
160	JMDX1-160	Hexagon socket set screws with cone point Series# 13091263 and up	M6X8	1
162	JMDX1-162	Plate Series# 13091263 and up		1
163	JMDX1-163	Emergency stop switch Series# 13091263 and up		1
164	JMDX1-164	Connctet plate Series# 13091263 and up		1
165	JMDX1-165	screw Series# 13091263 and up	M4x20	1
166	JMDX1-166	Nut Series# 13091263 and up	M6	1
167	JMDX1-167	washer Series# 13091263 and up		1
168	JMDX1-168	support board Series# 13091263 and up		1
169	JMDX1-169	screw Series# 13091263 and up	M4x12	2
170	JMDX1-170	Spacer Series# 13091263 and up		1
171	JMDX1-171	screw Series# 13091263 and up	M4X6	1
172	JMDX1-172	shaft Series# 13091263 and up		1
173	JMDX1-173	washer Series# 13091263 and up		2
174	JMDX1-174	screw Series# 13091263 and up	M5X20	1
175	JMDX1-175	outside cover Series# 13091263 and up		1

PART LIST FOR JMD-X1 / JMD-X1L MILLING DRILLING CENTER

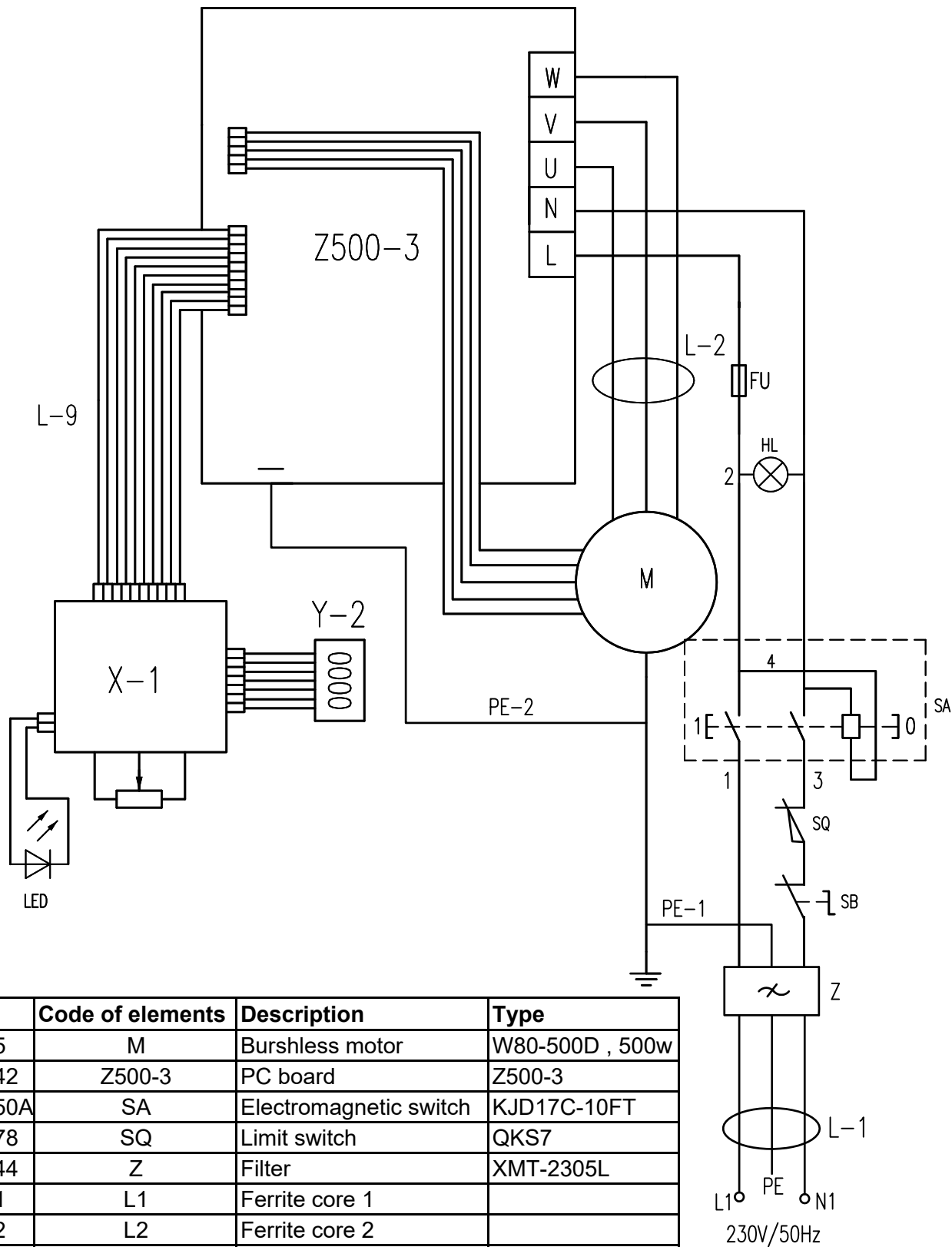
No.	Part no.	Description	Size	Qty.
176	JMDX1-176	inner protecting cover (sets) Series# 13091263 and up		1
177	JMDX1-177	Transition board Series# 13091263 and up		1
178	JMDX1-178	limit switch Series#shaft Series# 13091263 and		1
179	JMDX1-179	screw Series#shaft Series# 13091263 and up	M4X30	2
180	JMDX1-180	screw Series# 13091263 and up	M4X10	3
181	JMDX1-181	magnet block Series# 13091263 and up		1
182	JMDX1-182	stop block Series# 13091263 and up		1
183	JMDX1-183	screw Series# 13091263 and up	M4x16	1
184	JMDX1-184	lock connector Series# 13091263 and up		1

ACCESSORIES LIST FOR JMD-X1 / JMD-X1L MILLING DRILLING

No.	Part no.	Description	Size	Qty.
1	JMDX1-ACCES-01	Large wrench	36	1
2	JMDX1-ACCES-02	T- nut		2
3	JMDX1-ACCES-03	L Hex wrench	3,4,5,6	1
4	JMDX1-ACCES-04	Oil can	8	1
5	JMDX1-ACCES-05	Fuse	5A	1
6	JMDX1-ACCES-06	Socket head wrech	45-52	1
7	JMDX1-ACCES-07	Handle for spindle assemble		1
8	JMDX1-ACCES-08	Double end wrench	8-10	1
9	JMDX1-ACCES-09	Double end wrench	14-17	1
10	JMDX1-ACCES-10	Double end wrench	17-19	1
11	JMDX1-ACCES-11	Keyless drill chuck	B16 1-13mm	1
12	JMDX1-ACCES-12	Handle set		2



JMD-X1...50000025M.....1~230v,50Hz
 JMD-X1L ... 50000046M1~230v,50Hz



Part No.	Code of elements	Description	Type
JMDX1-95	M	Burshless motor	W80-500D , 500w
JMDX1-142	Z500-3	PC board	Z500-3
JMDX1-150A	SA	Electromagnetic switch	KJD17C-10FT
JMDX1-178	SQ	Limit switch	QKS7
JMDX1-144	Z	Filter	XMT-2305L
JMDX1-L1	L1	Ferrite core 1	
JMDX1-L2	L2	Ferrite core 2	
JMDX1-151	FU	Fuse	5A
JMDX1-146	HL	Green lamp	ZD10
JMDX1-Y2	Y-2	LCD	
JMDX1-X1	X-1	Panel	