

JET

JWL-1443

WOOD LATHE

JWL-1443-M 10000501M ~ 230V, 50Hz

PART LIST

JPW (Tool) AG

Tämplerlistrasse 5

CH-8117 Fällanden

Switzerland

Phone +41 44 806 47 48

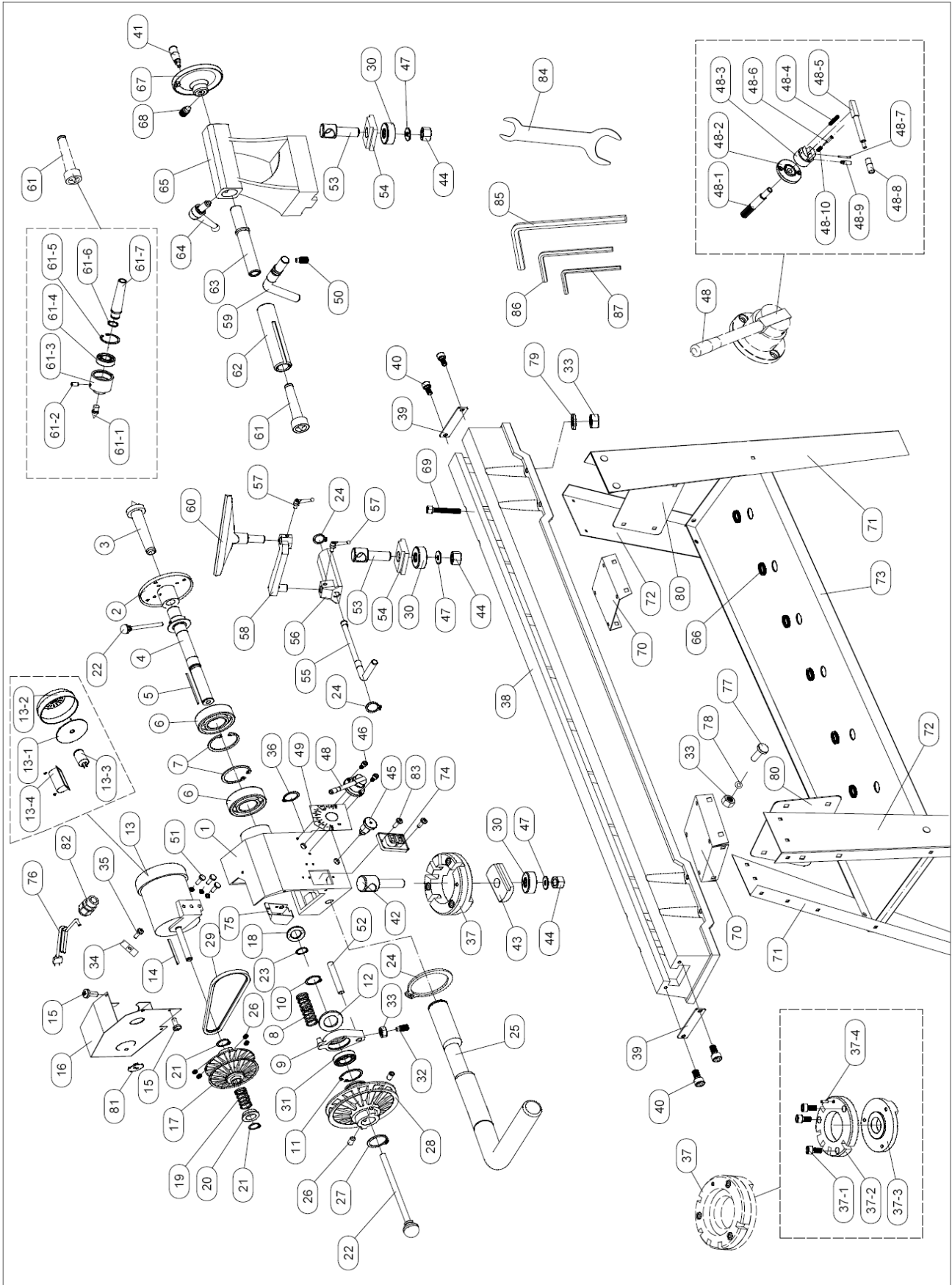
Fax +41 44 806 47 58

www.jettools.com



P-10000501M 2017-08

Parts Breakdown for JWL-1443 Wood Lathe



Parts List for JWL-1443 Wood Lathe

| Index No. | Part No. | Description | Size | Qty. |
|-----------|---------------|--------------------------------|------------|------|
| 1 | JWL1443-001 | Headstock | | 1 |
| 2 | JWL1443-002 | Face Plate | 6" | 1 |
| 3 | JWL1443-003 | Spur Center | MT2 | 1 |
| 4 | JWL1443-004 | Spindle | | 1 |
| 5 | JWL1443-005 | Key | 4 x 4 x 80 | 1 |
| 6 | JWL1443-006 | Ball Bearing | NSK6205 | 2 |
| 7 | JWL1443-007 | E-Ring | 52 | 2 |
| 8 | JWL1443-008 | Spring | | 1 |
| 9 | JWL1443-009 | Shifting Lever Bracket | | 1 |
| 10 | JWL1443-010 | C-Ring | 35 | 1 |
| 11 | JWL1443-011 | E-Ring | 62 | 1 |
| 12 | JWL1443-012 | Washer | | 1 |
| 13 | JWL1443-013 | Motor | 230V 750W | 1 |
| | JWL1443-013-1 | Motor Fan | | 1 |
| | JWL1443-013-2 | Motor Fan Cover | | 1 |
| | JWL1443-013-3 | Capacitor | 16uf 450V | 1 |
| | JWL1443-013-4 | Capacitor Cover | | 1 |
| 14 | JWL1443-014 | key | 4 x 4 x 80 | 1 |
| 15 | JWL1443-015 | Screw | M5x8 | 6 |
| 16 | JWL1443-016 | Pulley Cover | | 1 |
| 17 | JWL1443-017 | Motor Pulley | | 1 |
| 18 | JWL1443-018 | Wave Washer | 25 | 1 |
| 19 | JWL1443-019 | Spring | | 1 |
| 20 | JWL1443-020 | Sleeve | | 1 |
| 21 | JWL1443-021 | C-Ring | 16 | 1 |
| 22 | JWL1443-022 | Knockout Rod | | 2 |
| 23 | JWL1443-023 | C-Ring | 25 | 1 |
| 24 | JWL1443-024 | C-Ring | 19 | 3 |
| 25 | JWL1443-025 | Lever | | 1 |
| 26 | JWL1443-026 | Set Screw | M6x10 | 7 |
| 27 | JWL1443-027 | C-Ring | 25 | 1 |
| 28 | JWL1443-028 | Spindle Pulley | | 1 |
| 29 | JWL1443-029 | V-Belt | O-625 | 1 |
| 30 | JWL1443-030 | Nut | | 3 |
| 31 | JWL1443-031 | Ball Bearing | 6007 | 1 |
| 32 | JWL1443-032 | Set Screw | M8x25 | 1 |
| 33 | JWL1443-033 | Nut | M8 | 29 |
| 34 | JWL1443-034 | Clamp | | 1 |
| 35 | JWL1443-035 | Screw | M4x22 | 2 |
| 36 | JWL1443-036 | C-Ring | 19 | 1 |
| 37 | JWL1443-037 | Index Bracket | | 1 |
| | JWL1443-037-1 | Cap Screw | M8x16 | 2 |
| | JWL1443-037-2 | Upper Turning Base | | 1 |
| | JWL1443-037-3 | Lower Turning Base | | 1 |
| | JWL1443-037-4 | Pin | 3x22 | 1 |
| 38 | JWL1443-038 | Bed | | 1 |
| 39 | JWL1443-039 | Baffle | | 2 |
| 40 | JWL1443-040 | Cap Screw | M5x10 | 4 |
| 41 | JWL1443-041 | Handle | | 1 |
| 42 | JWL1443-042 | Bolt | | 1 |
| 43 | JWL1443-043 | Clamp | | 1 |
| 44 | JWL1443-044 | Hex. Nut M18 | | 3 |
| 45 | JWL1443-045 | Headstock Rotation Locking Pin | | 1 |
| 46 | JWL1443-046 | Cap Screw | M5x12 | 2 |

| Index No. | Part No. | Description | Size | Qty. |
|------------------|-----------------|----------------------------|-------------|-------------|
| 47 | JWL1443-047 | Rubber Packing | | 3 |
| 48 | JWL1443-048 | Speed Control Lever | | 1 |
| | JWL1443-048-1 | Gear Shaft | | 1 |
| | JWL1443-048-2 | Locating Base | | 1 |
| | JWL1443-048-3 | Handle Base | | 1 |
| | JWL1443-048-4 | Spring | | 1 |
| | JWL1443-048-5 | Handle | | 1 |
| | JWL1443-048-6 | Pin | | 1 |
| | JWL1443-048-7 | Pin | 3x32 | 1 |
| | JWL1443-048-8 | Handle Grip | | 1 |
| | JWL1443-048-9 | Set Screw | M8x20 | 1 |
| | JWL1443-048-10 | Spring | | 1 |
| 49 | JWL1443-049 | Speed Label | | 1 |
| 50 | JWL1443-050 | Set Screw | M6x12 | 1 |
| 51 | JWL1443-051 | Hex. Bolt | M8x30 | 3 |
| 52 | JWL1443-052 | Rack | | 1 |
| 53 | JWL1443-053 | Bolt | | 2 |
| 54 | JWL1443-054 | Clamp | | 2 |
| 55 | JWL1443-055 | Tool Support Rod | | 1 |
| 56 | JWL1443-056 | Tool Support Base | | 1 |
| 57 | JWL1443-057 | Tool Support Handle | | 2 |
| 58 | JWL1443-058 | Extension Tool Rest | | 1 |
| 59 | JWL1443-059 | Tailstock Rod | | 1 |
| 60 | JWL1443-060 | Tool Rest | | 1 |
| 61 | JWL1443-061 | Live Center | | 1 |
| | JWL1443-061-1 | Spur | | 1 |
| | JWL1443-061-2 | Set Screw | M6x10 | 1 |
| | JWL1443-061-3 | Spur Bush | | 1 |
| | JWL1443-061-4 | Ball Bearing | NSK6002 | 1 |
| | JWL1443-061-5 | E-Ring | 35 | 1 |
| | JWL1443-061-6 | C-Ring | 15 | 1 |
| | JWL1443-061-7 | Taper | | 1 |
| 62 | JWL1443-062 | Quill | | 1 |
| 63 | JWL1443-063 | Lead Screw | | 1 |
| 64 | JWL1443-064 | Tailstock Quill Handle | | 1 |
| 65 | JWL1443-065 | Tailstock | | 1 |
| 66 | JWL1443-066 | Rubber Bush | | 6 |
| 67 | JWL1443-067 | Handwheel | | 1 |
| 68 | JWL1443-068 | Set Screw | M8x12 | 1 |
| 69 | JWL1443-069 | Cap Screw | M8x35 | 8 |
| 70 | JWL1443-070 | Stand Upper Cover | | 2 |
| 71 | JWL1443-071 | Stand Leg Left | | 2 |
| 72 | JWL1443-072 | Stand Leg Right | | 2 |
| 73 | JWL1443-073 | Plate | | 1 |
| 74 | JWL1443-074 | Switch | | 1 |
| 75 | JWL1443-075 | Switch Box | | 1 |
| 76 | JWL1443-076 | Power Cord | | 1 |
| 77 | JWL1443-077 | Cup Head Square Neck Bolts | M8x16 | 28 |
| 78 | JWL1443-078 | Washer | 8 | 28 |
| 79 | JWL1443-079 | Spring Washer | 8 | 16 |
| 80 | JWL1443-080 | Stand Leg Cover | | 2 |
| 81 | JWL1443-081 | Cover | | 1 |

| Index No. | Part No. | Description | Size | Qty. |
|------------------|-----------------|--------------------------------------|-------------|-------------|
| 82 | JWL1443-082 | Strain Relief | | 1 |
| 83 | JWL1443-083 | Screw | M4x8 | 2 |
| 84 | JWL1443-084 | Spanner Wrench | S11-S13 | 1 |
| 85 | JWL1443-085 | Hex. Wrench | S3 | 1 |
| 86 | JWL1443-086 | Hex. Wrench | S4 | 1 |
| 87 | JWL1443-087 | Hex. Wrench | S6 | 1 |
| 101 | JET-113 | JET 3D Logo(not Shown) | 113x47 | 1 |
| | JWL1443-101 | JET LOGO (not Shown--Brushed Silver) | | 1 |
| 102 | JWL1443-102 | ID Label(not Shown) | | 1 |
| 103 | JWL1443-103 | Motor Label(not Shown) | | 1 |
| 104 | JWL1443-104 | Warning Label(not Shown) | | 1 |

JWL-1443-M...10000501M... ~ 230V, 50Hz

| | colour of strands | Litzenfarben | couleur des cordons |
|------|-------------------|--------------|---------------------|
| BK | black | schwarz | noir |
| WH | white | weiß | blanc |
| BU | blue | blau | bleu |
| YE | yellow | gelb | jaune |
| RD | red | rot | rouge |
| BN | brown | braun | brun |
| GY | grey | grau | gris |
| GNYE | green-yellow | grün-gelb | vert-jaune |
| OG | orange | orange | orange |
| VT | violet | violett | violet |

| | meaning of symbol | Bedeutung der Zeichen | interprétation |
|----|--------------------|------------------------|------------------------|
| M | motor | Motor | moteur |
| S | switch | Schalter | interrupteur |
| C | condenser | Kondensator | condensateur |
| E | electronic unit | Elektronik Einheit | unité électronique |
| F | fuse | Sicherung | fusible |
| RS | reversing switch | Drehrichtungsschalter | commu. droite/gauche |
| S | centrifugal switch | Fliehkraftschalter | déclencheur centrifuge |
| OL | overload cut-off | Überlastschuttschalter | déclencheur surcharge |
| LS | limit switch | Positionsendschalter | micro |

