

# JET

**JBS-22**

**BRUSH SANDER**

**649006M**

**230/50/1**

## PARTS LIST

**Walter Meier (Tool) AG**  
Tämperlistrasse 5  
CH-8117 Fällanden  
Switzerland  
Phone +41 44 806 47 48  
Fax +41 44 806 47 58  
[jetinfo.eu@waltermeier.com](mailto:jetinfo.eu@waltermeier.com)  
[www.jettools.com](http://www.jettools.com)

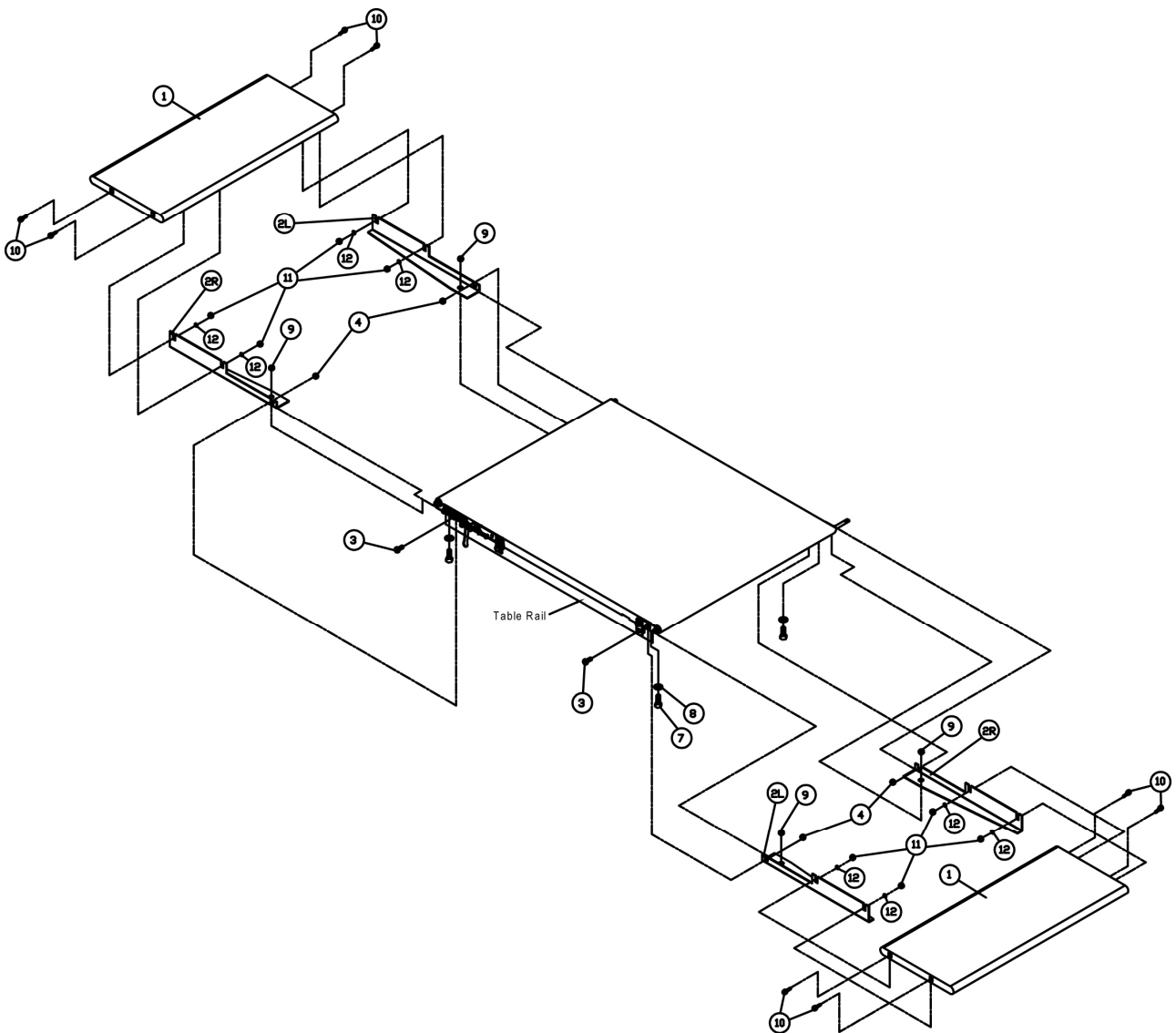


P-649006M

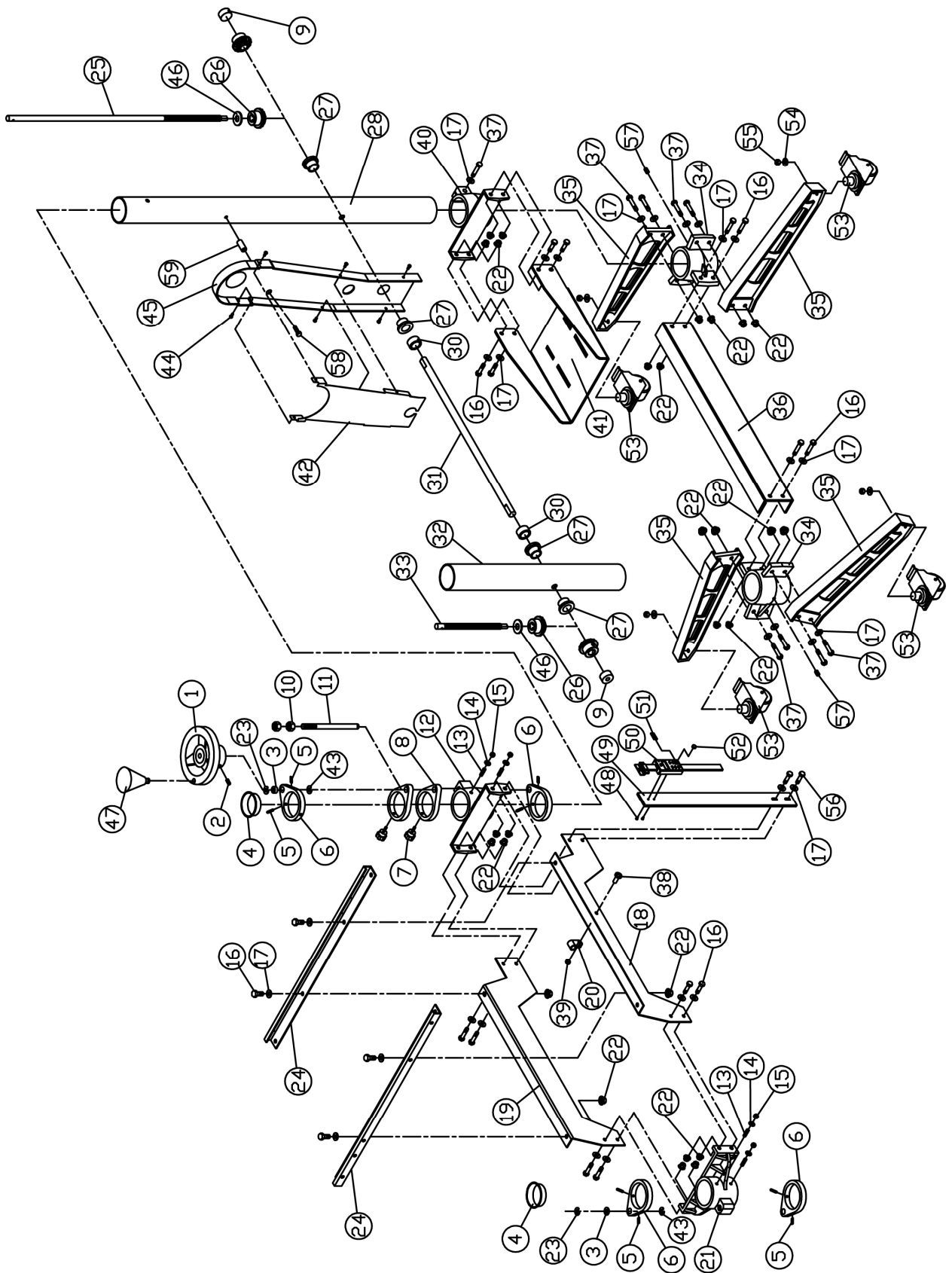
2010-08-24

## JBS-22 Infeed and Outfeed Tables

Index No.	Part No.	Description	Size	Qty
1	40-0329	Infeed/Outfeed Table		2
2L	40-0327	Mounting Bracket (LH)		2
2R	40-0328	Mounting Bracket (RH)		2
3	TS-0081031	Hex Cap Screw	5/16"-18x3/4"	4
4	12-0152	Square Nut	5/16"-18	4
7	TS-0060051	Hex Cap Screw	3/8"-16x1"	4
8	11-9103	Hardened Flat Washer	3/8"	4
9	12-0209	Flanged Lock Nut	3/8"-16	4
10	TS-0151011	Carriage Bolt	1/4"-20x3/4"	8
11	TS-0561011	Hex Nut	1/4"-20	8
12	TS-0680021	Flat Washer	1/4"	8



# JBS-22 Stand Assembly



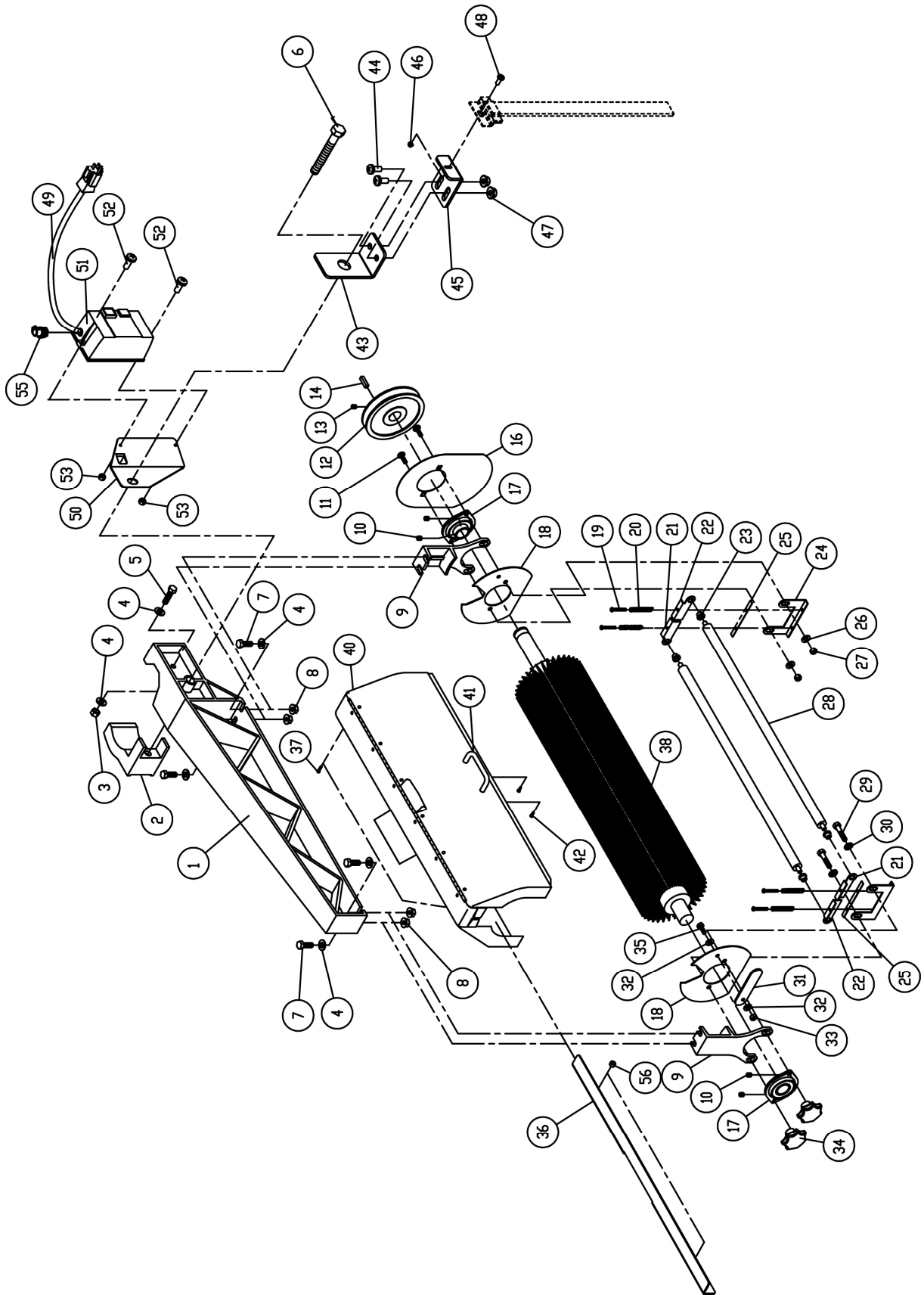
## JBS-22 Stand Assembly

Index No.	Part No.	Description	Size	Qty
1	31-0027	Handwheel Assembly	8" O.D., 1/2" I.D.	1
2	TS-0270031	Socket Set-screw	5/16"-18x3/8"	2
3	BB-R8ZZ	Bearing		4
4	80-4015	Plastic Cap	3"	2
5	TS-0267051	Socket Set-screw	1/4"-20x1/2"	10
6	30-1110	Adjusting Screw Support, Extrusion (Bearing)		4
7	81-3132	Depth Gauge Knob		2
8	30-1111	Adjusting Screw Support		2
9	80-4013	Plastic Cap	1"	2
10	TS-0561051	Hex Nut	1/2"-13	2
11	30-1260	Depth Gauge		1
12	30-5104	Inboard Table Support		1
13	10-9906	Brass Tip Socket Head Set-screw	5/16"-18x3/4"	4
14	TS-0680031	Flat Washer	5/16"	4
15	TS-0561021	Hex Nut	5/16"-18	4
16	TS-0060051	Hex Cap Screw	3/8"-16x1"	16
17	TS-0680041	Flat Washer	3/8"	29
18	40-3043W	Front Table Mount Bracket		1
19	40-3042W	Rear Table Mount Bracket		1
20	72-6208	Frame Clip		1
21	30-5105	Outboard Table Support		1
22	12-0209	Flanged Lock Nut	3/8"-16	28
23	20-0755	Retaining Ring	10mm ID, 20mm OD, 1mm H	2
24	40-0122	Table Rail		2
25	30-3250	Lead Screw (RH)		1
26	20-1101	Miter Gear		4
27	50-3107	Oilite Bushing	I.D. 1/2"	4
28	30-3044E	Inboard Column Tube		1
30	20-1103	Shaft Collar	I.D. 1/2"	2
31	30-3033-01	Transfer Rod		1
32	30-3036	Outboard Column Tube		1
33	30-3215	Follow Screw (LH)		1
34	30-1101	Column Base		2
35	30-1102-02	Leg		4
36	40-3041W	Base Support Bracket		1
37	TS-0060071	Hex Cap Screw	3/8"-16x1-1/2"	9
38	TS-081C032	Pan Head Machine Screw	#10-24x1/2"	1
39	TS-0560071	Hex Nut	#10-24	1
40	30-5107	Motor Support		1
41	40-0106W	Motor Support Bracket		1
42	40-3051WE	Middle Inner Belt Guard		1
43	20-0757	Retaining Ring	12mm ID, 23mm OD, 1mm H	2
44	10-3803	Flanged Hex Head Screw	#10-24x3/8"	6
45	80-1030E	Upper Belt Guard Cover		1
47	80-3131	Knob		1
48	TS-1531022	Pan Head Machine Screw	M3x8	2
49	2244PRO3-249	Digital Readout Plate		1
50	15S-314	Digital Readout		1
51	15S-600	Battery	Lithium 1.55V	1
52	15S-601	Battery Cover		1
	2244PRO3-CA	Caster Assembly, Single (Includes #53 - #55)		4
53	2244PRO3-253	Caster		4
54	TS-0680061	Flat Washer	1/2"	4
55	TS-0561051	Hex Nut	1/2"-13	4
56	TS-0060061	Hex Cap Screw	3/8"-16x1-1/4"	2
57	2244PRO3-257	Special Set-screw	1/2"-13x1/2"	2

## JBS-22 Stand Assembly

<b>Index No.</b>	<b>Part No.</b>	<b>Description</b>	<b>Size</b>	<b>Qty</b>
58 .....	2244PRO3-258 .....	Hex Cap Screw.....	M6x50.....	1
59 .....	2244PRO3-259 .....	Spacer .....		1

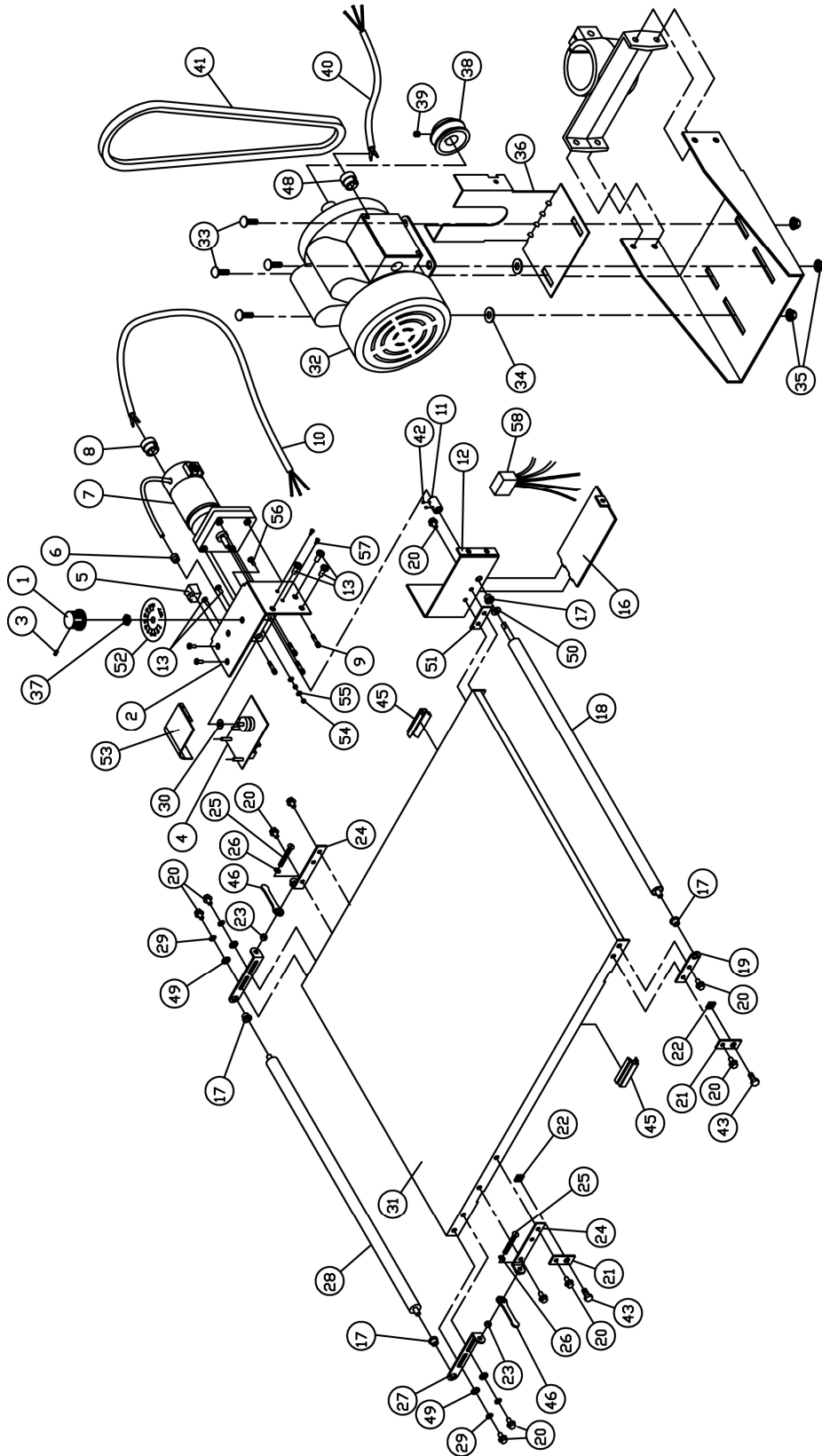
# JBS-22 Drum Head Assembly



## JBS-22 Drum Head Assembly

Index No.	Part No.	Description	Size	Qty
1	30-0002W	Drum Carriage Arm		1
2	30-0015W	Clamp Jaw		1
3	TS-0561031	Hex Nut	3/8"-16	1
4	TS-0680041	Flat Washer	3/8"	6
5	TS-0060061	Hex Cap Screw	3/8"-16x1-1/4"	1
6	30-0059	Clamp Bolt		1
7	TS-0060051	Hex Cap Screw	3/8"-16x1"	4
8	12-0209	Flanged Lock Nut	3/8"-16	4
9	30-0010W	Carriage Leg		2
10	10-8602	Nyloc Socket Head Set-screw	1/4"-28x1/4"	4
11	TS-0152011	Carriage Bolt	5/16"-18x1"	2
12	50-2501	Driven Pulley	5"	1
13	10-2903	Nyloc Socket Head Set-screw	5/16"-18x1/4"	2
14	20-0762	Keystock	1/4"x1/4"x1"	1
	40-0305	Drum Alignment Template (not shown)		2
16	40-3050WA	Upper Inner Belt Guard		1
17	50-3067	Drum Bearing		2
18	40-0050W	Drum Shield		2
19	10-3108	Phillips Fillister Head Screw	#8-32x1"	4
20	20-3211	Tension Roller Spring		4
21	40-0303	Left Tension Roller Support Bracket		2
22	40-0302	Right Tension Roller Support Bracket		2
23	50-3105	Oilite Bushing	I.D. 5/16"	4
24	40-0304	Tension Roller Bracket		2
25	80-1060	Tension Roller Bracket Pad		2
26	TS-0680031	Flat Washer	5/16"	2
27	TS-0561021	Hex Nut	5/16"-18	2
28	30-3051-02	Tension Roller		2
29	TS-0051061	Hex Cap Screw	5/16"-18x1-1/4"	2
30	11-0505	Internal Tooth Lock Washer	5/16"	2
31	40-0015	Drum Adjustment Lever		1
32	TS-0680021	Flat Washer	1/4"	2
33	TS-0640071	Nylon Insert Lock Nut	1/4"-20	1
34	80-3133	Drum Adjustment Knob		2
35	TS-0050031	Hex Cap Screw	1/4"-20x3/4"	1
36	2244PRO3-336	Bracket		1
37	2244PRO3-337	Screw	1/4"-20x5/8"	2
38	60-6001	Brush Drum	#80	1
40	81-2122W	Dust Cover Assembly		1
41	80-2343	Dust Cover Handle		1
42	10-3904	Self Tap Screw	#8x1/2"	2
43	2244PRO3-343	Upper Bracket		2
44	TS-081F032	Pan Head Machine Screw	1/4"-20x3/4"	2
45	2244PRO3-345	Lower Bracket		1
46	TS-0560081	Hex Nut	#10-32	1
47	TS-0561011	Hex Nut	1/4"	2
48	TS-081D032	Pan Head Machine Screw	#10-32x1/2"	1
49	2244PRO3-349E	Cord, Magnetic Switch to Control Housing		1
50	2244PRO3-350	Switch Plate		1
51	2244PRO3-351	Magnetic Switch		1
	2244PRO3-351C	Contactors		1
	2244PRO3-351O	Overload		1
52	TS-081C052	Pan Head Machine Screw	#10-24x3/4"	2
53	TS-0560071	Hex Nut	#10-24	2
55	2244PRO3-355E	Strain Relief		2
56	2244PRO3-356	Hex Nut		2
	98-0060	TufTool (not shown)		1

# JBS-22 Conveyor and Motor Assembly





## JBS-22 Conveyor and Motor Assembly

Index No.	Part No.	Description	Size	Qty
1	72-2250-01	Knob		1
2	2244PRO3-402E	Control Housing Bracket		1
3	72-2250-05	Set-screw Slotted	#8-36UNFx5/16"	1
4	2244PRO3-404E	SandSmart Controller	50Hz	1
5	72-2120E	Receptacle	230 Volt	1
6	72-6101E	Small Strain Relief		1
7	2244PRO3-407E	Gear Motor Assembly	180V DC	1
	2244PRO3-407BS	Brush and Spring Kit (Gear Motor)		2
8	72-6105E	Large Strain Relief		1
9	6760031	Socket Head Cap Screw	#10-32x1/2"	4
10	2244PRO3-410E	Power Cord		1
11	30-0122	Shaft Coupling		1
12	2244PRO3-412	Controller Base Bracket		1
13	10-9002	Slotted Hex Head Screw	#10-32x1/2"	5
16	40-4022W	Control Housing Base Cover		1
17	50-3105	Oilite Bushing	I.D. 5/16"	4
18	30-3050-02	Rubber Covered Drive Roller		1
19	40-0005	Drive Roller Support Bracket		1
20	10-9010	Hex Washer Head Bolt	1/4"-20x1/2"	12
21	40-0006	Conveyor Mounting Bracket		4
22	12-0152	Square Nut	5/16"-18	4
23	TS-0561011	Hex Nut	1/4"-20	2
24	40-0004	Take-Up Stationary Bracket		2
25	10-3213	Slotted Round Head Screw	1/4"-20x1-3/4"	2
26	TS-0732041	Internal Tooth Lock Washer	1/4"	2
27	40-0003	Take-Up Slide Bracket		2
28	30-3010-02	Driven Roller		1
29	20-1161	Wave Washer	1/4"	4
30	72-2250-03	Washer	5/16	1
31	40-0002	Conveyor Bed		1
32	2244PRO3-432E	Motor, TEFC	3HP, 230V, 1Ph	1
	2244PRO3-432MF	Motor Fan (not shown)		1
	2244PRO3-432MFC	Motor Fan Cover (not shown)		1
	2244PRO3-432CS	Centrifugal Switch (not shown)		1
	2244PRO3-432SCE	Starting Capacitor (not shown)	250VAC, 250MFD	1
	2244PRO3-432RCE	Running Capacitor (not shown)	450VAC, 25mF	1
	2244PRO3-432SCCE	Starting Capacitor Cover (not shown)		1
	2244PRO3-432RCCE	Running Capacitor Cover (not shown)		1
	2244PRO3-432JBE	Junction Box (not shown)		1
	2244PRO3-432JBC	Junction Box Cover (not shown)		1
33	6086013	Carriage Bolt	5/16"-18x3/4"	4
34	11-0104	Hardened Flat Washer	3/8"	2
35	12-0207	Flanged Lock Nut	5/16"-18	4
36	40-0997W	Lower Inner Belt Guard		1
37	72-2250-04	Nut, Hex	5/16"-24	1
38	50-0251	Drive Pulley		1
39	10-8902	Nyloc Socket Head Set-screw, Cup Pt	5/16"-18x1/4"	2
40	2244PRO3-440E	Motor Cord		1
41	50-2009	V-Belt		1
42	TS-0267021	Socket Head Set-screw	1/4"-20x1/4"	2
43	TS-0081031	Hex Cap Screw	5/16"-18x3/4"	4
	60-0321-P	Conveyor Belt (not shown)		1
45	98-0080	Tracker		2
46	40-0260	Wrench		2
48	72-6104E	Strain Relief		1
49	TS-0680021	Flat Washer	1/4"	4

## JBS-22 Conveyor and Motor Assembly

Index No.	Part No.	Description	Size	Qty
50	3735140	Washer	5/16"	1
51	3735141	Spacer		1
52	72-2250-02	Speed Adjustment Label		1
53	40-4018	Wiring Guard		1
54	TS-0560081	Hex Nut	#10-32	2
55	TS-073203	Internal Tooth Lock Washer	#10	2
56	TS-081D032	Phillips Pan Head Machine Screw	#10-32x1/2"	1
57	2244PRO3-457	Phillips Pan Head Machine Screw	#6-32x3/8"	2
58	2244PLUS-112	EMC		1

**JBS-22**  
**649006M**  
**230/50/1**

	colour of strands	Litzenfarben	couleur des cordons
BK	black	schwarz	noir
WH	white	weiß	blanc
BU	blue	blau	bleu
YE	yellow	gelb	jaune
RD	red	rot	rouge
BN	brown	braun	brun
GY	grey	grau	gris
GNYE	green-yellow	grün-gelb	vert-jaune
OG	orange	orange	orange
VT	violet	violett	violet

	meaning of symbol	Bedeutung der Zeichen	interprétation
M	motor	Motor	moteur
S	switch	Schalter	interrupteur
C	condenser	Kondensator	condensateur
E	electronic unit	Elektronik Einheit	unité électronique
F	fuse	Sicherung	fusible
RS	reversing switch	Drehrichtungsschalter	commu. droite/gauche
CS	centrifugal switch	Fliehkraftschalter	déclencheur centrifuge
OL	overload cut-off	Überlastschutzschalter	déclencheur surcharge
LS	limit switch	Positionsendschalter	micro

**JBS-22**  
**649006M**  
**230/50/1**

